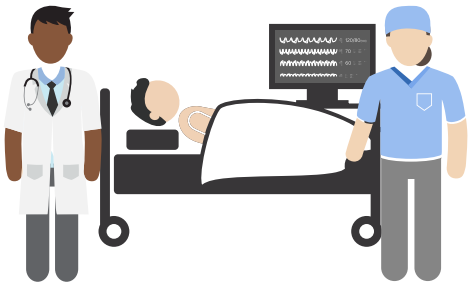




# MSC FELLOWSHIP PROGRAMS



MSC Fellowship Programs are designed to provide the competence and confidence you need prior to your first real-world case. You will work side-by-side with our Clinical Education Specialists through didactic and hands-on simulation components that provide you with comprehensive hospital-based procedural knowledge.

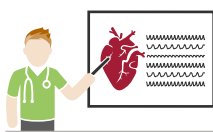
## WHO IS THE PROGRAM FOR?

-  **Attending Physicians**
-  **Clinical Research**
-  **Fellows**
-  **Medical Students**

## PROGRAM COMPONENTS



Hands-on  
Simulation Training



Didactic  
Education



Cross-Functional  
Team Training



Augment Existing  
Programs

**Advancing Quality.**  
**Saving Lives.™**



## FELLOWSHIP PROGRAMS



### NEUROVASCULAR INTERVENTIONS

- **Stroke**
- **Carotid Artery Stenting (CAS)**
- **Neurocoiling** (*coming soon!*)

#### COVERED TOPICS INCLUDE:

- Anatomies and common variations
- Lesion recognition
- Disease identification and treatment
- Understanding procedural flow
- Using embolic protection devices, specialized balloons, stents and thrombectomy equipment

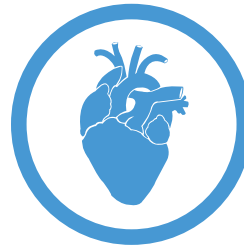


### PERIPHERAL INTERVENTIONS

- **Superficial Femoral Artery Repair (SFA)**
- **Below the Knee (BTK) Repair**
- **Renal Artery Repair**
- **Iliac Artery Repair**

#### COVERED TOPICS INCLUDE:

- Anatomies and common variations
- Common lab set-ups
- Disease identification and treatment
- PAD and CLI recognition and treatment
- Device selection and sizing



### COMPLEX AORTIC INTERVENTIONS

- **Thoracic Endovascular Aortic Repair (TEVAR)**
- **Transfemoral Aortic Valve Implantation (TAVI)**
- **Endovascular Aortic Repair (EVAR)**

#### COVERED TOPICS INCLUDE:

- Anatomies and common variations
- Common lab set-ups
- Management of complications
- Endoleak recognition and management
- Procedural considerations
- Device selection and sizing



### CORONARY INTERVENTIONS

- **Coronary PCI**
- **Right Heart** (*coming soon!*)

#### COVERED TOPICS INCLUDE:

- Anatomies and common variations
- Disease identification and treatment
- Complication recognition and management
- Lesion location, identification and differentiation
- Heart exam best practices (*Coming soon!*)
- Waveform identification (*Coming soon!*)



For more information or to schedule your training please contact MSC at [manufacturergroup@medsimulation.com](mailto:manufacturergroup@medsimulation.com) or call **1.888.889.5882**